

***Congratulations on purchasing your new Bow Sight  
from .30-06 Outdoors!***

Our bow sights are a universal fit for compound bows, lightweight, compact, and is easy to install. Our exclusive truss blade pin design support and protect pins; as well as make changing your fiber optics easily. Featuring laser-etched markings and machined all-aluminum construction.

Make sure you have purchased the correct sight for your needs.\*

What's included in your package:

- a. (1) Sight Housing
- b. (2) Mounting Bolts
- c. (1) Sight Light (on select models)



**You Will Need a set of Allen Keys  
for install (not included)**

*\*Visit your local dealer for professional install and  
assistance with sighting in your bow for best results.*



***Congratulations on purchasing your new Bow Sight  
from .30-06 Outdoors!***

Our bow sights are a universal fit for compound bows, lightweight, compact, and is easy to install. Our exclusive truss blade pin design support and protect pins; as well as make changing your fiber optics easily. Featuring laser-etched markings and machined all-aluminum construction.

Make sure you have purchased the correct sight for your needs.\*

What's included in your package:

- a. (1) Sight Housing
- b. (2) Mounting Bolts
- c. (1) Sight Light (on select models)



**You Will Need a set of Allen Keys  
for install (not included)**

*\*Visit your local dealer for professional install and  
assistance with sighting in your bow for best results.*



### **Mounting the Sight to the Riser:**

Begin by removing all items from the enclosed bag. Select the set of mounting eyelets you wish to use and place the bolts within **Figure 1,2**. Using an Allen Key screw the bolt through the eye let into the corresponding threads on your riser **Figure 3**. Do not over tighten as this will cause your bolt to become stripped. Then screw the sight light into its corresponding threads in the sight **Figure 4**.

### **Making Adjustments:**

As you start shooting, you will want to adjust your pins based on where your arrow is hitting on the target. Remember: Follow your Arrow! For example, if your arrow is hitting 1" to the right of where you aimed, then the sight needs to go to the right. You can make left and right adjustments by loosening the screw and sliding the housing along the markings as a guide **Figure 5**. Same for your up and down adjustment, you can loosen the screw and slide the housing along the markings **Figure 6**.

**Pro Tip:** Once your bow is sighted in, take a marker and mark the etchings that your sight is sitting on. In the event that your bow is dropped or somehow gets moved; you then have your last known sight in recorded.



Figure 1



Figure 2



Figure 3



Figure 4



Figure 5

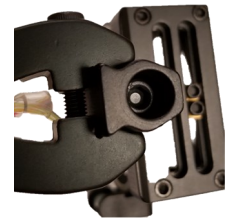


Figure 6

### **Mounting the Sight to the Riser:**

Begin by removing all items from the enclosed bag. Select the set of mounting eyelets you wish to use and place the bolts within **Figure 1,2**. Using an Allen Key screw the bolt through the eye let into the corresponding threads on your riser **Figure 3**. Do not over tighten as this will cause your bolt to become stripped. Then screw the sight light into its corresponding threads in the sight **Figure 4**.

### **Making Adjustments:**

As you start shooting, you will want to adjust your pins based on where your arrow is hitting on the target. Remember: Follow your Arrow! For example, if your arrow is hitting 1" to the right of where you aimed, then the sight needs to go to the right. You can make left and right adjustments by loosening the screw and sliding the housing along the markings as a guide **Figure 5**. Same for your up and down adjustment, you can loosen the screw and slide the housing along the markings **Figure 6**.

**Pro Tip:** Once your bow is sighted in, take a marker and mark the etchings that your sight is sitting on. In the event that your bow is dropped or somehow gets moved; you then have your last known sight in recorded.



Figure 1



Figure 2



Figure 3



Figure 4



Figure 5



Figure 6